



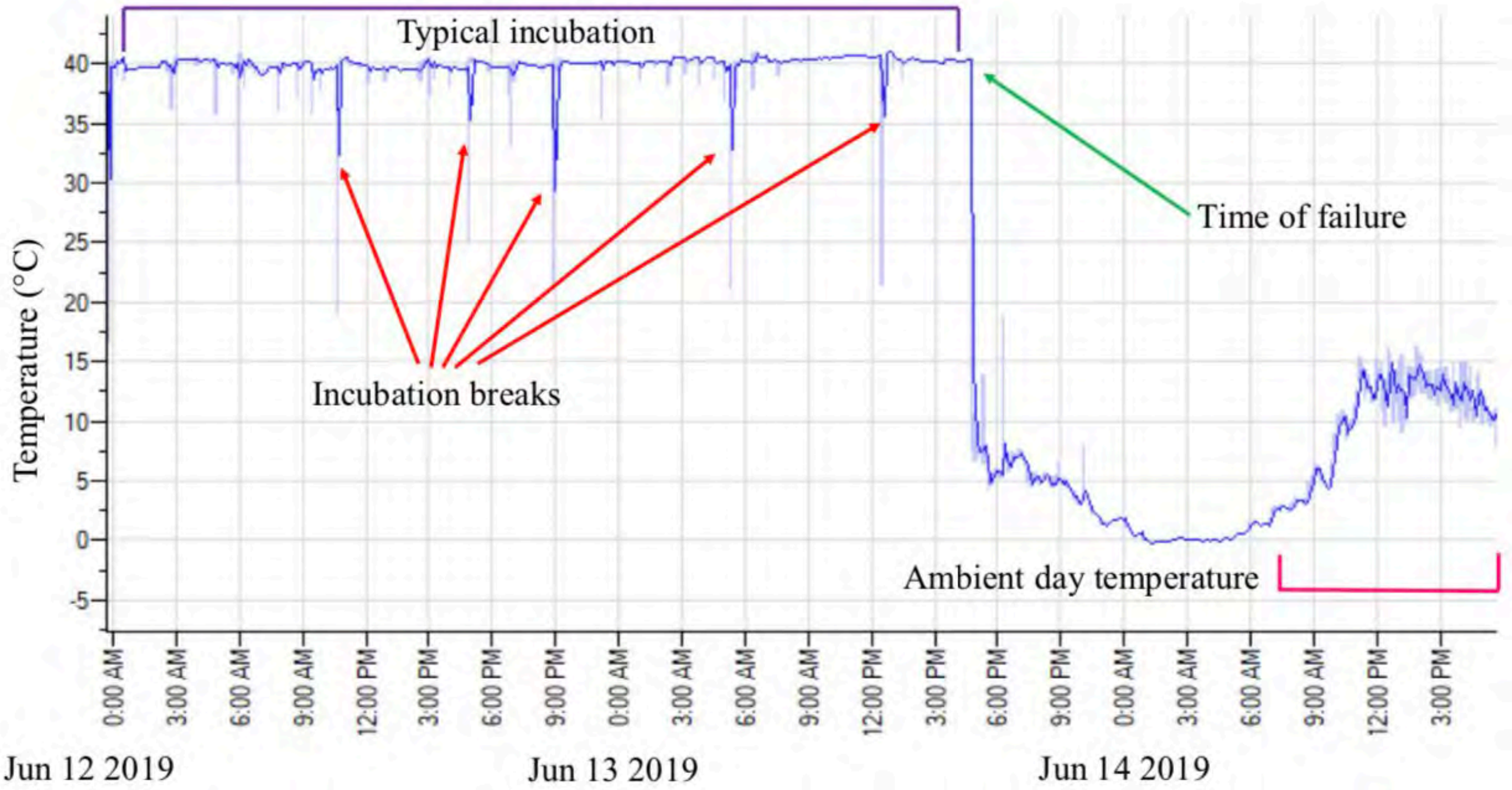
Remote Monitoring of Shorebird Nests

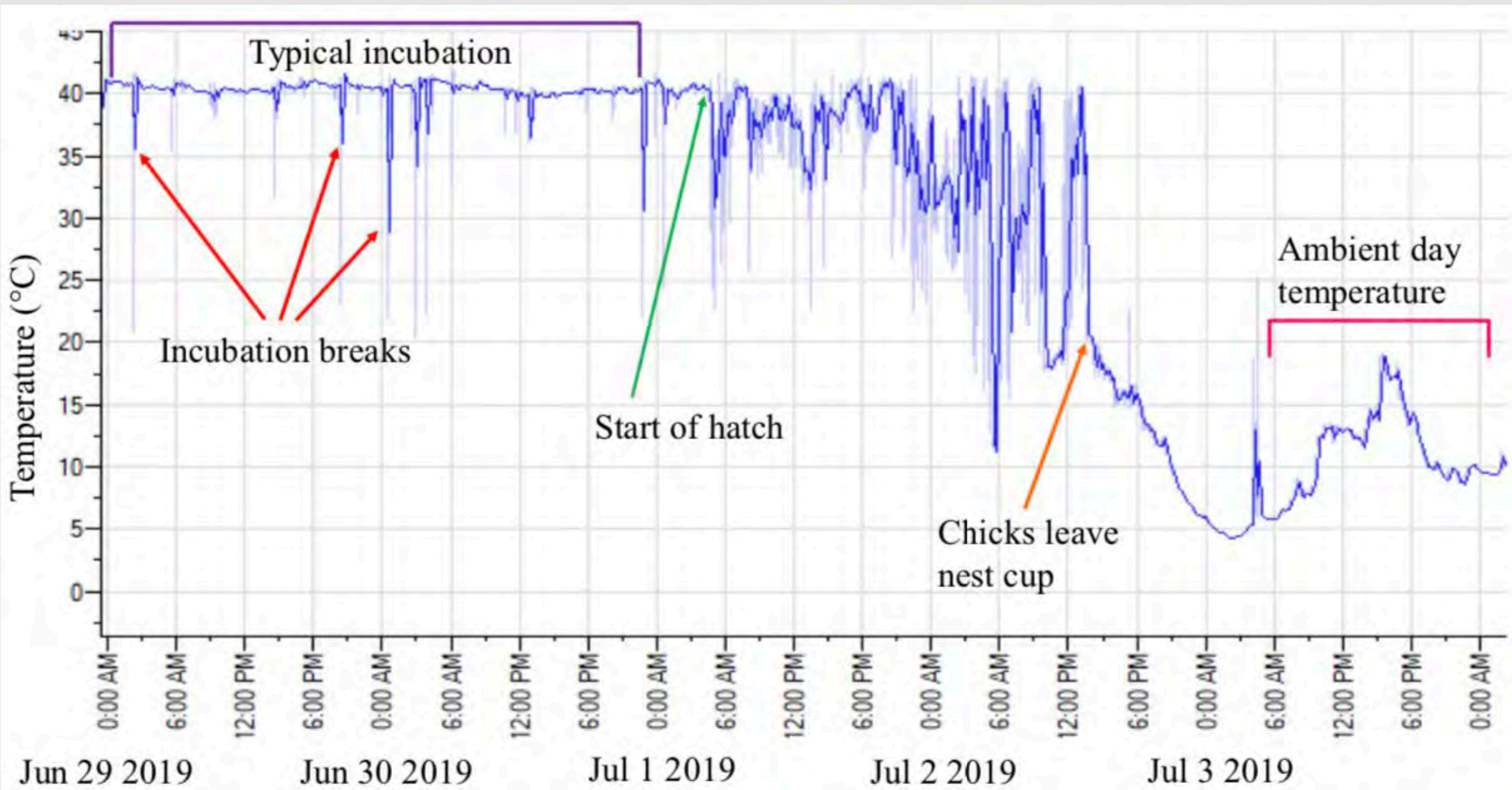
Sarah Hoepfner, Chris Latty, Rick Lanctot, Shiloh
Schulte, Stephen Brown

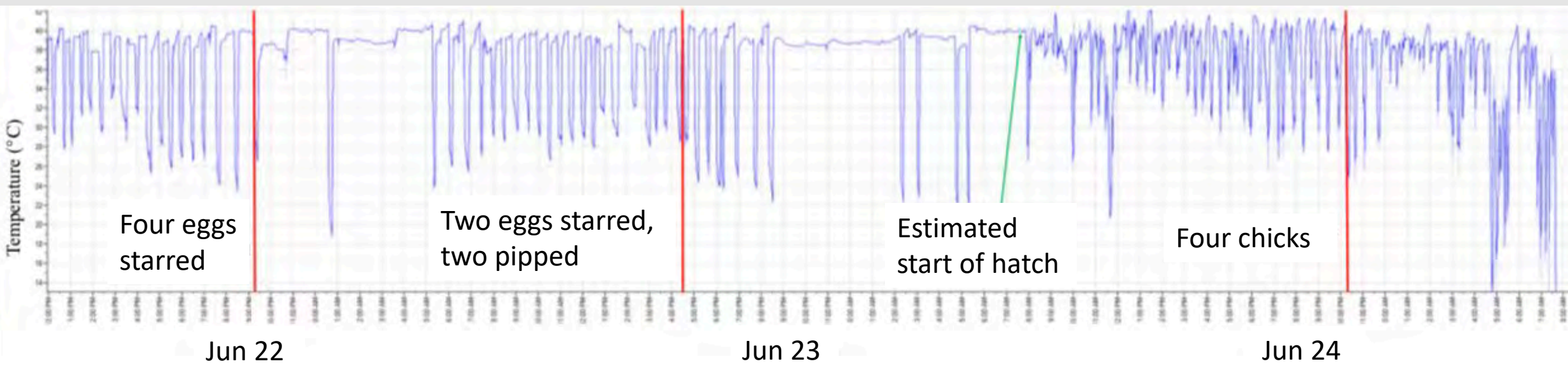


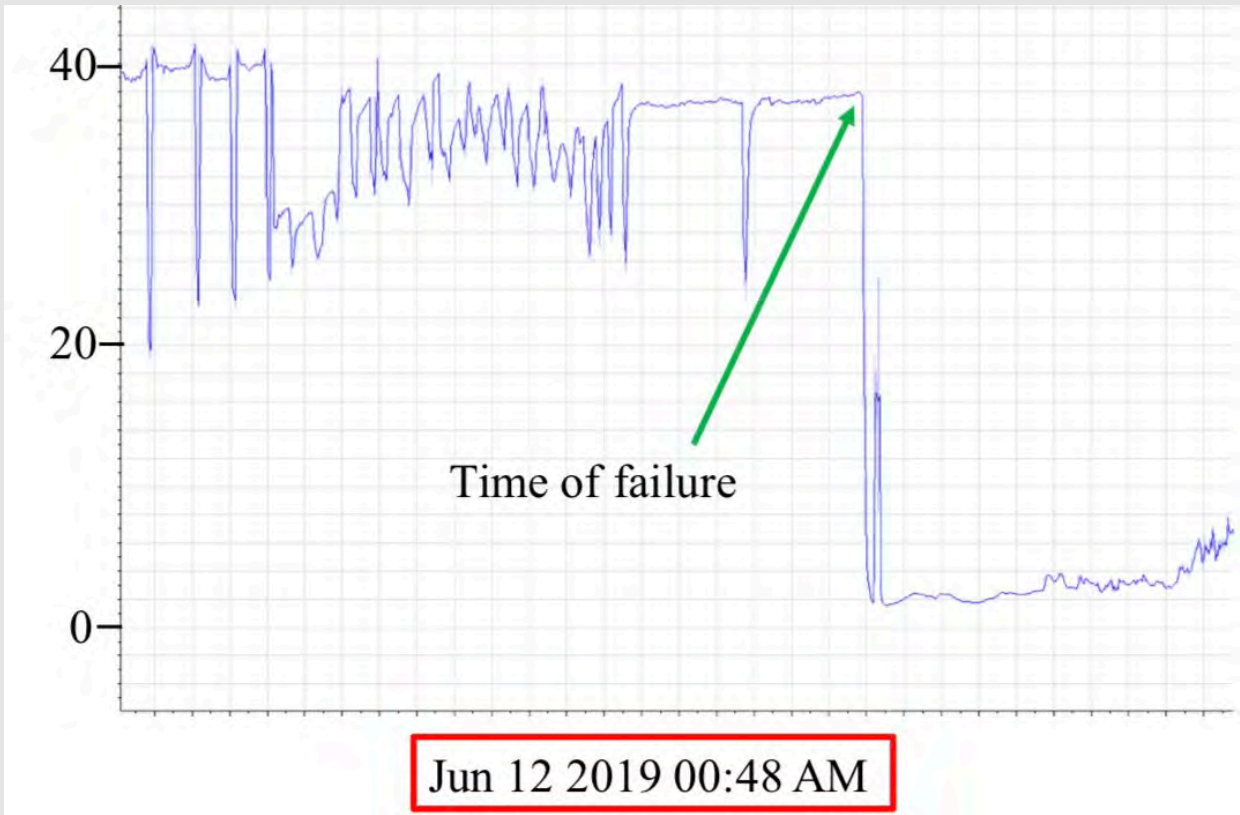








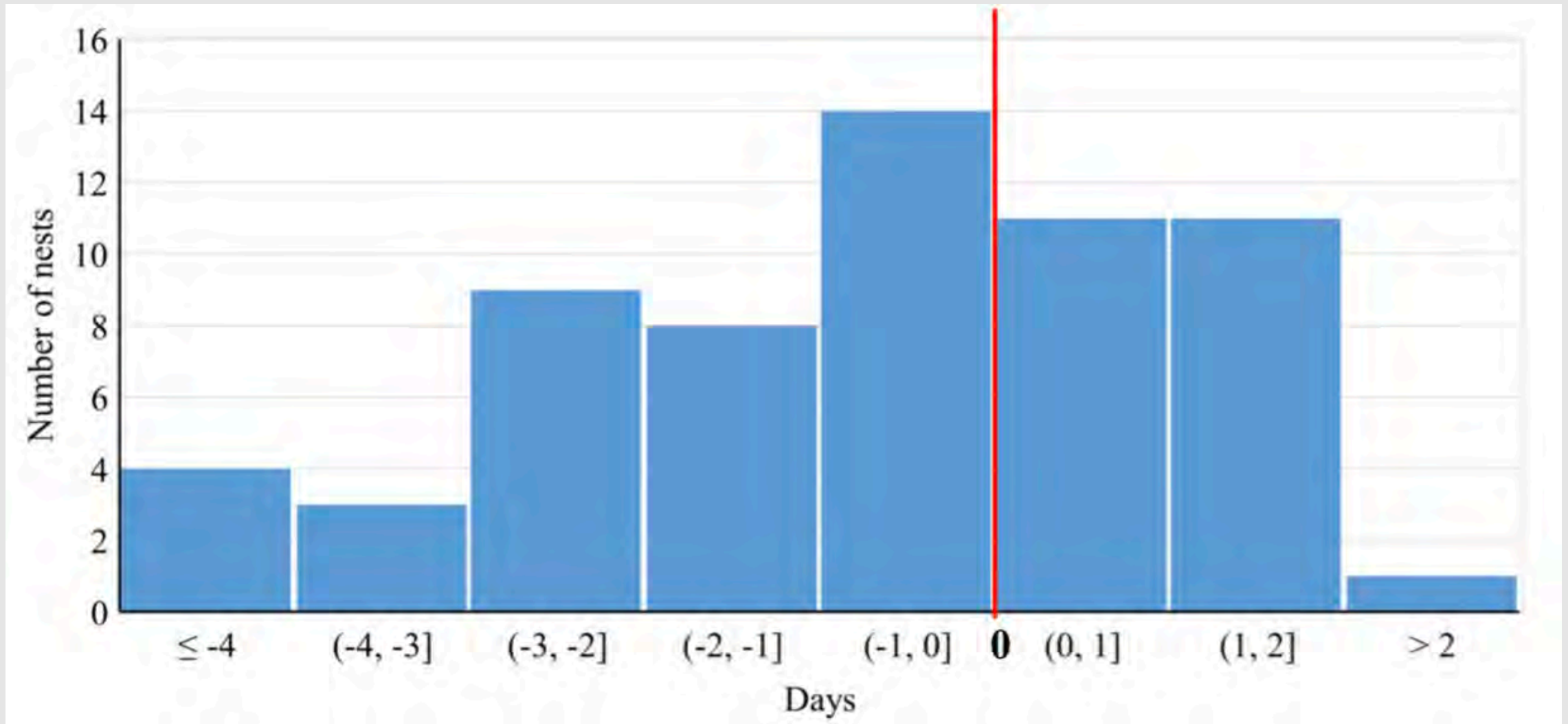


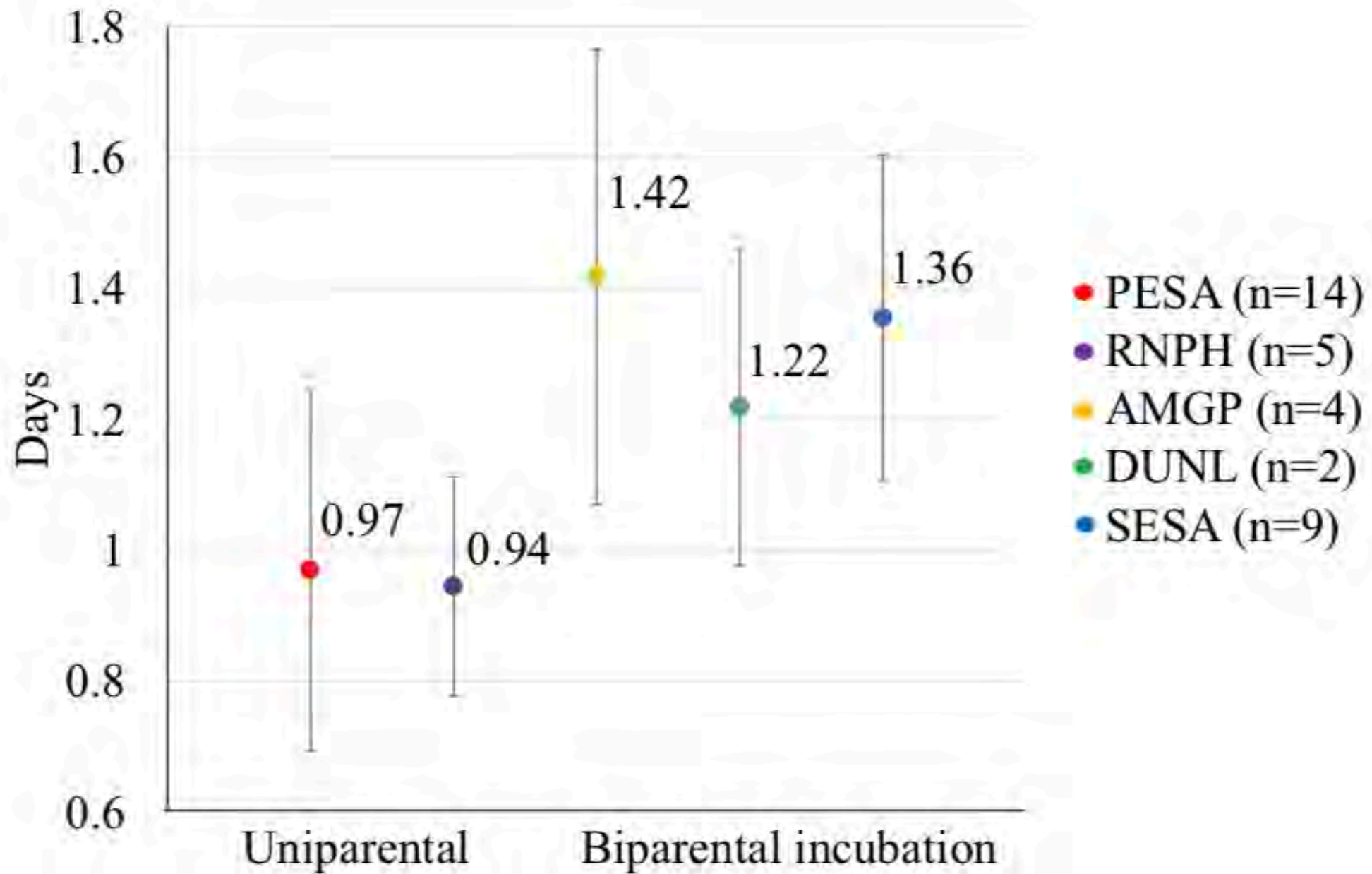


- Can accurately assign nest fate and time
- Know the predator
- Predator seen at the bowl, likely eating chicks
- Eliminates the need for visits of active nests



Days difference in temperature defined hatch and float estimated hatch date





Future studies

- Still need to assess nest survival effect
- No need to revisit nests
- Another line of fate evidence
- Expand to more species



Thank you!

- US Fish and Wildlife Service, Arctic National Wildlife Refuge
- Manomet
- Field Crews
- FWS I&M Program
- Science Applications

